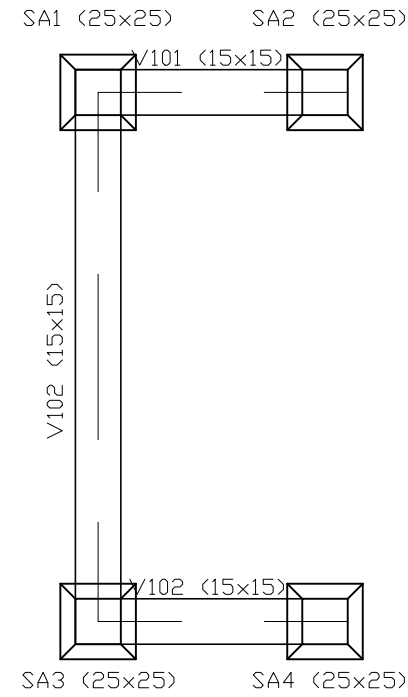


1 Planta Baixa Depósito

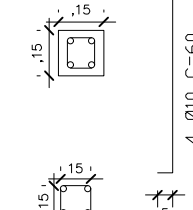
1:25



2 Formas baldrame

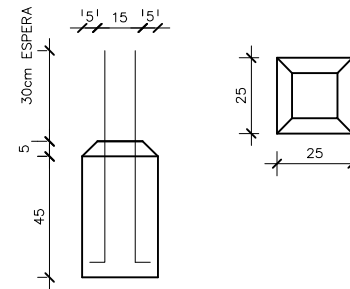
1:25

ARRANQUE PILAR

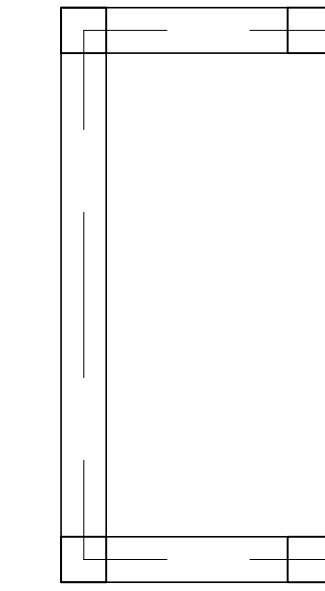


4 Ø5.0 C/15 C=55

DETALHE SAPATA



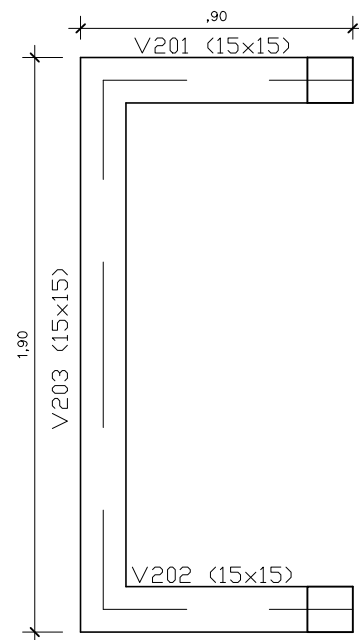
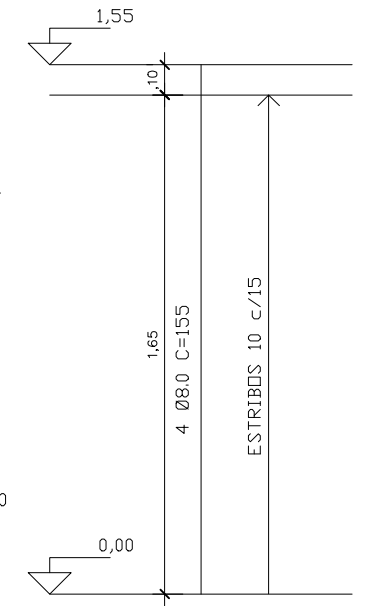
P1 (15x15) P2 (15x15)



P3 (15x15) P4 (15x15)

3 Pilares

1:25



4 Vigas respaldo

1:25

PREFEITURA MUNICIPAL TAPEJARA/RS

Obra:

REFORMA DA ESCOLA LEONEL DE MOURA BRISOLA

Detalhe:

REFORMA GERAL DA PARTE EXISTENTE DA ESCOLA, COBERTURA DA CIRCULAÇÃO E COBERTURA ENTRE A ESCOLA NOVA E O GINÁSIO

Prancha:

Depósito de gás

Proprietário:

PREFEITURA MUNICIPAL DE TAPEJARA

Prancha:

02

Responsável Técnico:

Arq. Julio Cesar Seidler CAU/RS A58203-4

Escala:

1/25

Data:

Fevereiro-2024