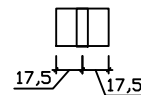
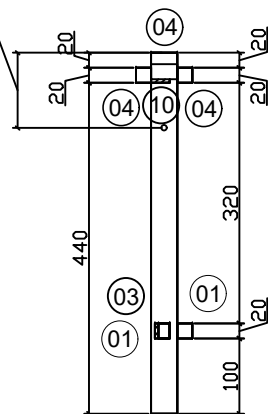


TUBO MONTAGEM 50mm



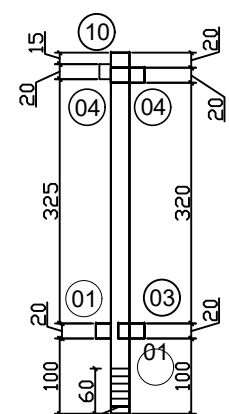
100-cota tubo montagem



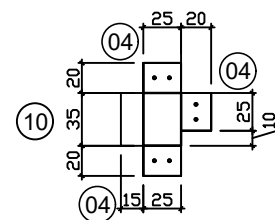
VISTA 2

P8
(25x35)

FAZER RANHURA

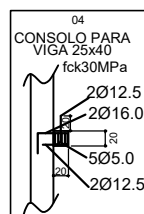


VISTA 1

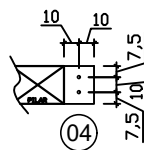


VISTA 2

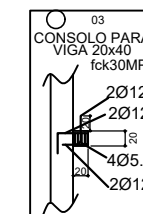
VISTA 1



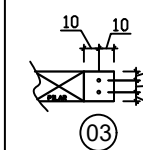
DETALHES POSIÇÃO DE PINOS NOS CONSÓLES DIMENSÃO 20x25x20 cm RECEBEM VIGA 25x40



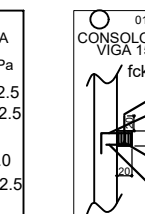
Vista Superior Pilar



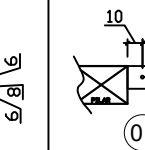
DETALHES POSIÇÃO DE PINOS NOS CONSÓLES DIMENSÃO 20x20x20 cm RECEBEM VIGA 20x40



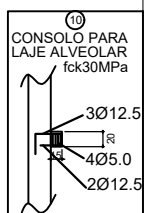
Vista Superior Pilar



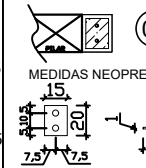
DETALHES POSIÇÃO DE PINOS NAS MIZULAS DIMENSÃO 20x25x40 cm RECEBEM VIGA 25x50



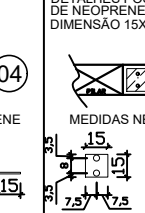
Vista Superior Pilar



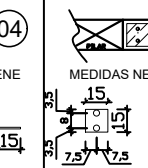
DETALHES POSIÇÃO DE NEOPRENE DIMENSÃO 15x20 cm



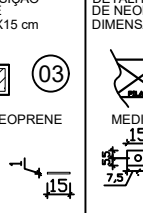
Vista Superior



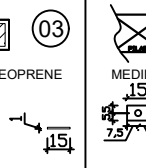
DETALHES POSIÇÃO DE NEOPRENE DIMENSÃO 15x15 cm



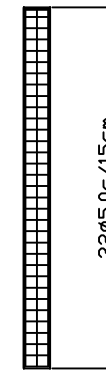
Vista Superior



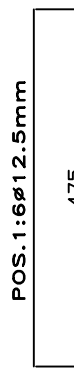
DETALHES POSIÇÃO DE NEOPRENE DIMENSÃO 15x20 cm



Vista Superior



detalhe estribos



detalhe armaduras

DETALHE PILAR



fck30MPa

POS.1:6Ø12.5mm

Estribos #8.0mm/15cm



#8.3mm C=112

Estribos #8.0mm/15cm

Estribos #8.0mm/15cm

OBS: Respeitar posicionamento das ferragens conforme a proximidade.

Folha:

08

PREFEITURA DE
TAPEJARA

Rua do Comércio, 1468 - Centro
Tapejara-RS
Fone: (54)3344-4700

Projeto:

Ampliação - Escola Leonel de Moura Brizola

Prancha:

Detalhe - Pilar P8

Local:

Rua do Comércio - Tapejara/RS

Responsáveis Técnicos:

Andreia Eugênia Faresin Elisabete Pires da Silva Roberto Pires da Silva
CREA RS 097148 CREA RS 242938 CREA RS 160132

Data:

Novembro/2021

Área:

1.171,72 m²

Escala:

Indicada

Desenho:

Eng. Elisabete Pires